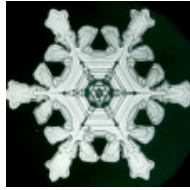


PRODUCT CARE

Resistance Against Weather



Much care is taken during manufacture and finishing to ensure that every Europa Leisure product offers years of pleasure. However, as with everything, it is necessary to provide a little care and maintenance to ensure lasting satisfaction. We strongly recommend that all garden furniture is stored away at the end of the Summer. All furniture (not just ours) will give years more pleasure if protected from the worst ravages of the weather.

Our Mosaic, Stone and Marble tables and chairs are weather resistant and designed for outdoor and indoor use. They must, however, be first dried and then stored away in the winter as we do not guarantee them as being frost-proof.

Resistance To Staining



Natural Stone, including our Travertine Marbles, are porous and will absorb liquids. Any spillages should be removed without delay to avoid the possibility of staining. Some liquids (lemon juice, tonic water, cola, red wine to name but a few) will all leave stains or blemishes which can be difficult to remove.

Natural Stone and Mosaic Ranges



Many of our tables are made from natural stone. Colours will vary and no two tables will be alike; this is part of the charm of buying a product using natural materials rather than man-made. Natural stone does have slight pits and blemishes and sometimes fissures which look like cracks. These are part and parcel of natural stone and are sometimes filled with a resin during manufacture; such blemishes and colour variations are unavoidable and do not constitute a fault.

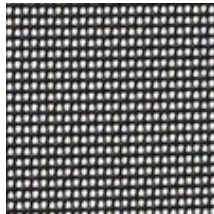
Many of our tables have tops of natural riven stone. Therefore, please expect the surface to be “riven!” This adds to the natural beauty of the table, but if you are seeking a perfectly smooth and even surface then please opt for one of our other styles.

Resin Weave Wicker



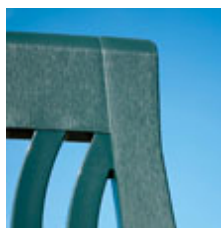
Many of our ranges use resin-weave wicker. This is a tough, resin-based weather-resistant woven material and, in some cases, it has variegated shading which serves only to heighten the effect of being ‘the real thing’. The wicker is easy to clean using warm soapy water, rinsed off with plain water. Avoid damage by sharp objects. If the ‘tail’ of the wicker should at any time come free, it can be secured with adhesive. Despite being resistant to the rain, the furniture should be stored away in winter as prolonged exposure to very cold conditions will result over time in the material becoming brittle and breaking down.

Textilene



Textilene fabric is ideal for garden furniture as it shrugs off the rain and is easy to clean with warm soapy water, well rinsed off. Care should be taken that it is not damaged accidentally by sharp objects.

Resin Furniture



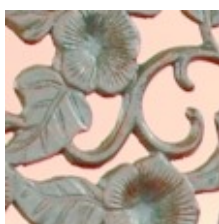
Our Nardi furniture is almost indestructible, is UV stabilised and will withstand extreme temperature changes. Being so much lighter in weight than metal furniture, it should be protected in high winds to avoid being blown over.

Parasols



These should not be used in breezy conditions and should always be lowered when not in use as a sudden gust could cause it, and the table too, to blow over. Although the fabric is shower-resistant, the life expectancy will be much greater if the parasol is allowed to dry and then stored out of the weather.

Metal Components

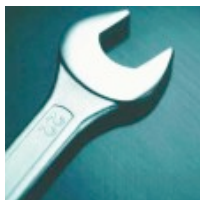


Many of our ranges are partially constructed of steel or aluminium. Those living in coastal regions will be aware that sea spray and salt air play havoc with most metals, especially steel, and although our furniture is weather and rust resistant, we offer no guarantee against corrosion by sea air. If you live near the sea, you would be better advised to consider one of our aluminium or resin sets.

Steel will rust if the protective surface is damaged in any way. Our steel products undergo many cleaning, rust inhibiting and powder coating processes so that the product will look good for some time before repainting becomes necessary. It is, however, possible that minor damage to the powder-coat finish can occur during assembly or, despite our superior packaging, it is even conceivable that slight chips can be caused during transit. To avoid rusting, any small chip marks should be touched-up with matching enamel paint. These minor blemishes are often unavoidable, and we do not consider products showing minor rust spots to be faulty.

Please contact us at customerservices@jacksgardenstore.com or on 0117 3600 505 and we will be happy to provide a small pot of touch-up paint.

Home Assembly



Many of our self-assembly furniture ranges use aluminium components and/or fixings. However, aluminium is a relatively 'soft' metal and it is easy to strip threads or snap bolts if over tightened. We recommend the use of a hand spanner for assembly as opposed to a socket set.